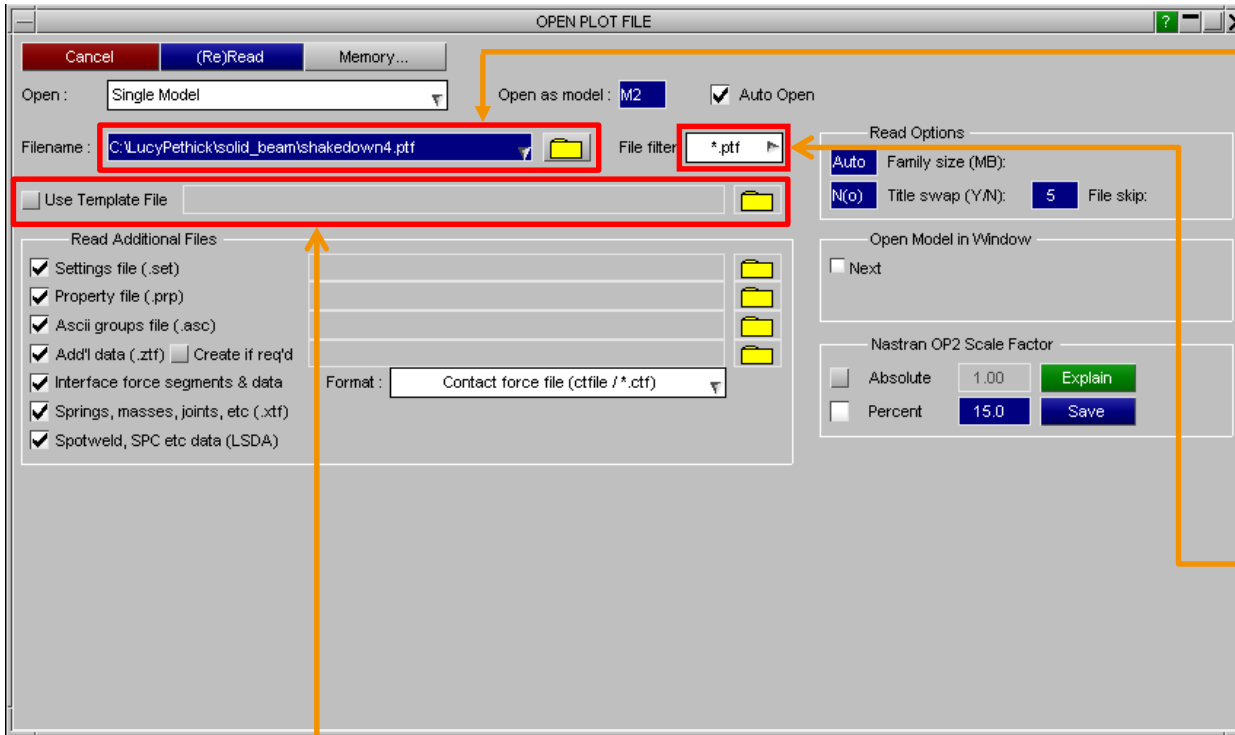



Opening Models – Single Model

File Options

- The default “Open Model” menu allows for single or multiple models to be selected by either typing in a filename or browsing for a file.
- This particular example will go through opening a single model.

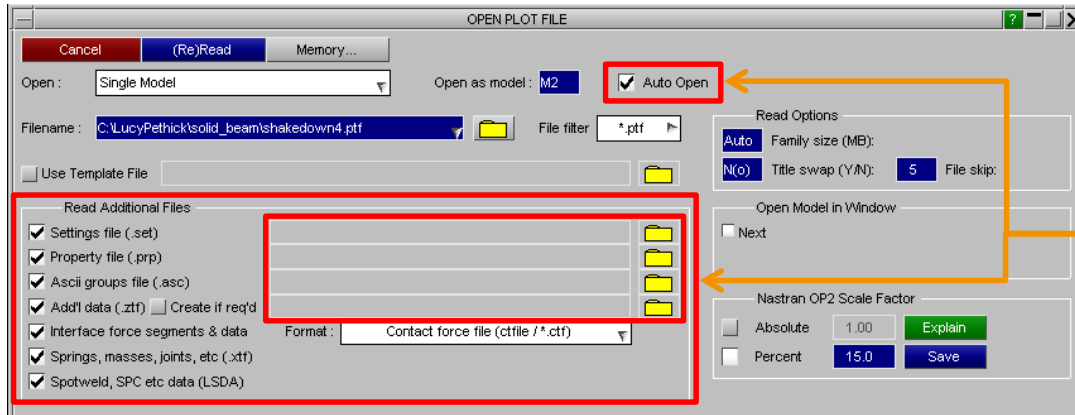


Filename for the model file to be opened can be typed into the text entry box or the folder button  can be used to search for the required model file. Recent files can be found in the drop down menu.

The file filter option is used to select which file extension to search for when selecting a model file to open. For LSTC filenames (D3PLOT, etc), select d3*, within the file filter popup menu.

The Use Template File panel allows template files to be read in, which can contain information such as; which windows models are located in, model offsets, colours and initial plotting modes.

File Options



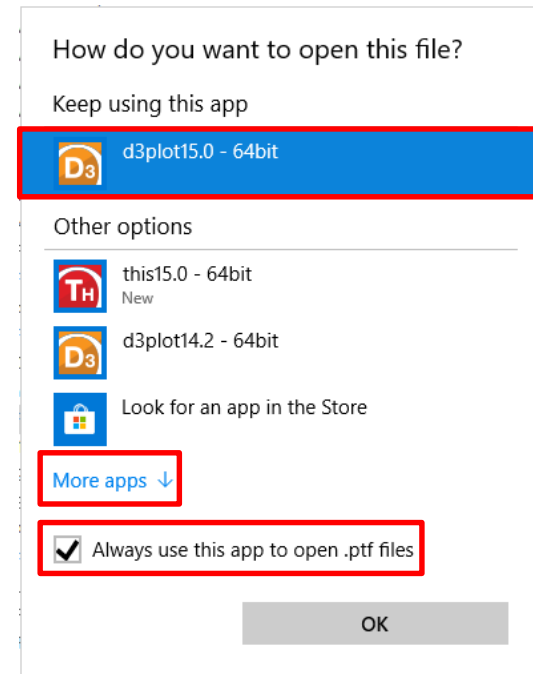
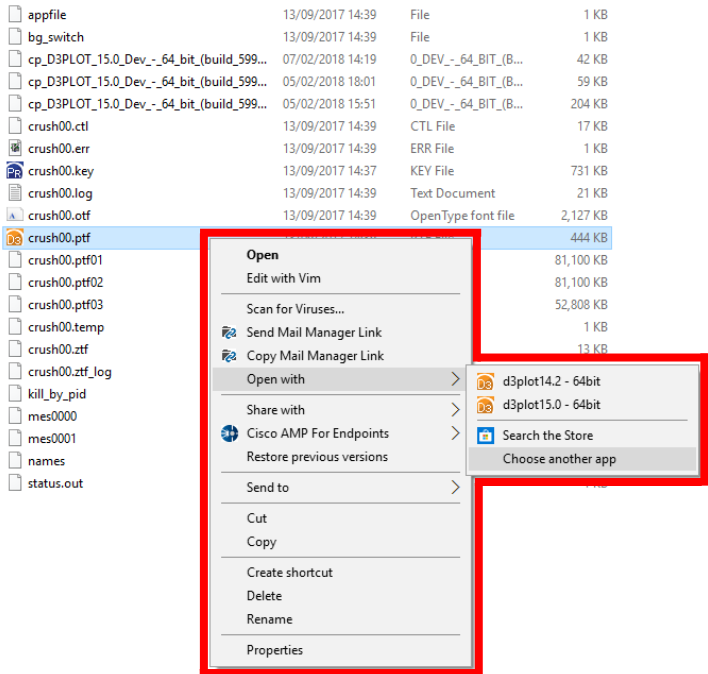
The Read Additional Files panel allows additional files to be read. With the Auto Open option selected, D3PLOT automatically selects these additional files to be read. Deselecting the Auto Open option, allows the file names of the additional files to be modified and allows the user to manually search for a particular additional file.

Settings File	Contains window settings: background colour, data component, etc
Properties File	Contains model properties: colours, blanking, transparency, etc
Ascii groups	Group information
Add'l data (.ztf)	Contains additional data used by D3PLOT to plot items not in the ptf/d3plot file (created by PRIMER).
Create if req'd	This will automatically open PRIMER, read in the keyword matching the ptf filename, generate a ztf file, save it in the same folder and close PRIMER.
Contact data (.ctf)	Contains information on contact surface locations and forces
Spring / mass (.xtf)	Contains information on springs, lumped masses, joints
Spotweld, SPC (LSDA)	Contains data for spotwelds, SPCs, seatbelts, X-sections

File Association

To set D3PLOT as the default program to open a .ptf in Windows: right click on a .ptf file in Windows Explorer > Open with > Choose another app > More apps > select D3PLOT. The file should then automatically open within D3PLOT.

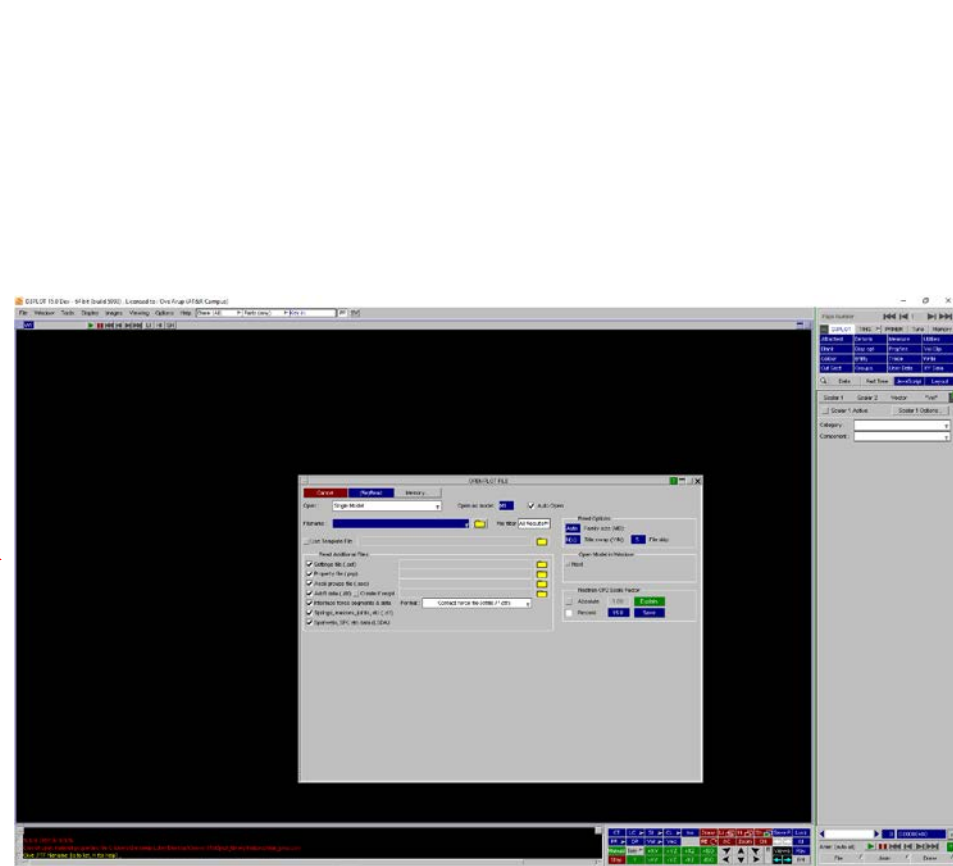
If you open a .ptf file using this method, you will not get the options on the open plot file menu in the previous slide.



Drag & Drop

With D3PLOT open, you can also drag in a .ptf file and it will read in.

bg_switch	01/02/2018 17:09	File	1 KB
binout0000	01/02/2018 17:10	File	25 KB
cp_PRIMER_14.2_-_64_bit_(build_21204)_1...	29/01/2018 18:06	2_-_64_BIT_(BUILD...	1 KB
d3dump01.0000	29/01/2018 17:10	0000 File	1,131 KB
d3dump01.0001	29/01/2018 17:10	0001 File	1,123 KB
d3dump01.0002	29/01/2018 17:10	0002 File	1,126 KB
d3dump01.0003	29/01/2018 17:10	0003 File	1,122 KB
kill_by_pid	01/02/2018 17:09	File	1 KB
load_profile.csv	01/02/2018 17:10	Microsoft Excel C...	2 KB
load_profile.xy	01/02/2018 17:10	XY File	2 KB
mes0000	01/02/2018 17:10	File	73 KB
mes0001	01/02/2018 17:10	File	15 KB
mes0002	01/02/2018 17:10	File	15 KB
mes0003	01/02/2018 17:10	File	15 KB
metal-forming.ctl	01/02/2018 17:09	CTL File	17 KB
metal-forming.err	01/02/2018 17:10	ERR File	1 KB
metal-forming.k	01/02/2018 17:07	K File	7 KB
metal-forming.log	01/02/2018 17:10	Text Document	63 KB
metal-forming.otf	01/02/2018 17:10	OpenType font file	32,206 KB
D3 metal-forming.ptf	01/02/2018 17:09	PTF File	4 KB
metal-forming.ptf01	01/02/2018 17:10	PTF01 File	124 KB
metal-forming.ptf02	29/01/2018 17:10	PTF02 File	8 KB
metal-forming.temp	01/02/2018 17:09	TEMP File	1 KB
metal-forming.ztf	16/01/2018 14:28	ZTF File	4 KB
metal-forming.ztf_log	16/01/2018 14:28	ZTF_LOG File	0 KB
names	01/02/2018 17:09	File	1 KB
status.out	01/02/2018 17:09	OUT File	1 KB



Contact Information

ARUP

www.arup.com/dyna

For more information please contact the following:

UK:

The Arup Campus
Blythe Valley Park
Solihull
B90 8AE
United Kingdom

T +44 121 213 3399
dyna.support@arup.com

China:

Arup
39F/41F
Huaihai Plaza
1045 Huaihai Road (M)
Xuhui District
Shanghai 200031
China

T +86 21 3118 8875
china.support@arup.com

India:

Arup
Ananth Info Park
HiTec City
Madhapur Phase-II
Hyderabad 500081, Telangana
India

T +91 40 44369797 / 98
india.support@arup.com

or contact your local Oasys Ltd. distributor.